

## **HAELOK® TECH.**

THE PRODUCT LINE ESPECIALLY FOR MECHANICAL & PLANT ENGINEERING.



HAELOK® has developed its own product line called TECH especially for the application area of mechanical & plant engineering.

In the development of the TECH product line, in compliance with highest standards and the promise of stability in mechanical & plant engineering is the goal. Thus HAELOK® has succeeded in providing a simple and yet absolutely safe system for the performance of machine plants.

**HAELOK® – HIGHEST STANDARDS.  
OPTIMAL PERFORMANCE.**

## **TECH - THE PROPERTIES.**

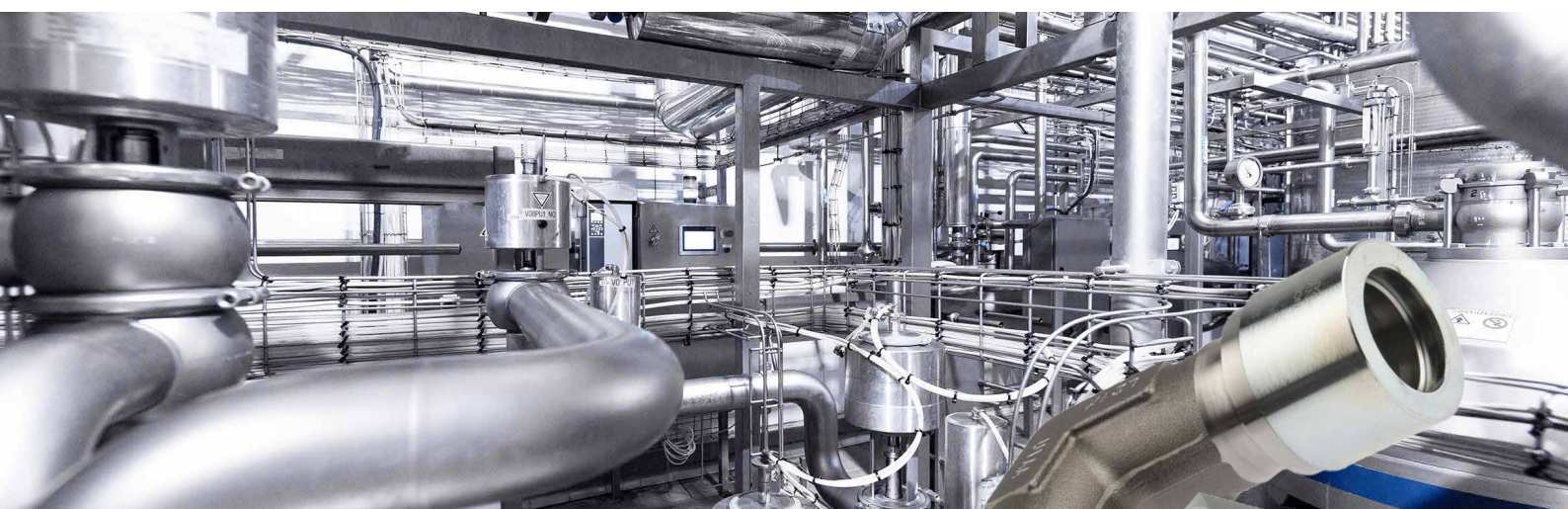


The TECH system is specially optimized to withstand high pull-out forces and compressive strength. A precisely defined behaviour, which is important for mechanical and plant engineering, optimizes performance and ensures a high degree of safety. This product line, which is characterized by stability and temperature resistance, is marked by its product group «10».

**HAELOK® – EFFICIENT & PRECISE.**

## **HAELOK® – THE SYSTEM.**

HAELOK® is the leading pure metal to metal press fitting connection system. The high-performance swage fittings are designed for extremely high pressures and temperatures as well as a fast and secure press connection without sealing elements and welding. The system can be safely installed also in existing plants and works without pipe constriction. The specially developed pressing tools always guarantees the same quality of each individual connection. A perfect connection in a few seconds.



**RELIABLE. ROBUST.  
SOLID. INNOVATIVE.**



## TECH - PRODUCT LINE.

The system is specially designed for use under vibrations, high pressures and high temperatures. Available in stainless steel (XX) and galvanized steel (CC).



Straight fitting



Repair fitting



Reducer



End cap



Fitting thread internal



Fitting thread external



Elbow 90°



Union tee



DKO 24° fitting



Distributor 2 outlets



DIN Flange



SAE Flange

## TECH - TECHNICAL DATA.

According to the current requirements of the Pressure Equipment Directive:

- Temperature range from -20° to +300°C (CC);  
-190° bis +400°C (XX)
- Nominal pressure up to 1000 bar
- Pipe diameter from  $\varnothing$  10 –  $\varnothing$  114.3 mm
- Can be used for seamless and welded pipes according to the standards:
  - EN ISO 10216-5 and 7
  - EN ISO 1127 / EN 10220
  - ASTM A213, A268, A269

A detailed overview of technical data can be found in the HAELOK® catalogue or contact us.

## HAELOK® - PRESS TOOLS.

HAELOK® press tools in four different sizes suitable for any application with interchangeable inserts and professional carrying cases.



PT 0613



PT 1228



PT 3060



PT 76114



Tool inlays



Tool case



**ALWAYS INFORMED!**  
Register now for our newsletter at [www.haelok.com](http://www.haelok.com).



The digital access  
to HAELOK®.  
[shop.haelok.com](http://shop.haelok.com)